

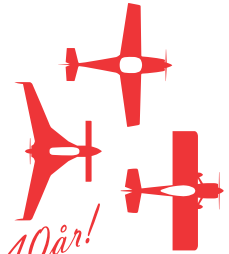


OPPDAL

INTERNATIONAL
EXPERIMENTAL FLY-IN

19-21 AUGUST 2016

EAA 40år!



PROGRAM

Program/Info for Fly-In i samarbeid med Oppdal Flyklubb

EAA Chapter 573 Norway og Oppdal Flyklubb har gleden av å invitere deg til årets Jubileums - Fly-In.

Fredag 19.08.16

- 16:00 - 20:00 Innlosjering 8 senger (første mann "til mølla"), andre i telt.

Lørdag 20.08.16

- 09:00 - 11:00 Frokost
- 09:00 - 18:00 Ankomst fly ("Beer call" 18:00)
- 13:00 - Felles flytur "Innerdalsrunden"
- 1830 - 1900 RC Petit Airshow
- 1900 - 1930 Sundown Airshow
- 20:00 - 02:00 Festmiddag i Microhangaren
- 20:00 - 21:00 Quiz og utdeling av premier.

Søndag 21.08.16

- 09:00 - 11:00 Frokost (Avreise hele dagen)

Viktig info

Kontaktpersoner.

Flyplassjef :	Odd Nyberg,	E-mail: oddnyberg@online.no,	Tlf +47 932 17 042
EAA Chapter 573 :	Øystein Aune,	E-mail: oysteinaune83@gmail.com,	Tlf +47 920 16 122
EAA Chapter 573 :	Øyvind Nyberg,	E-mail: oyvind_lynx@msn.com,	Tlf +47 979 57 820
Flyplassinfo:	Otto Vollan,	E-mail: otto.vollan@oppdal.com	Tlf +47917 66 740

- Info om flyplassen og brukerhåndbok finnes på: www.mfl.no
- Det oppfordres til å sette seg godt inn i reglene for flyplassen (ta spesielt hensyn til støyrestriksjoner).
- Påmelding til felles middag på lørdag ønskes senest onsdag 17 august (vil bli tatt høyde for noen få sene påmeldinger)
- Deltagere på Fly-In vil ikke bli avkrevd PPR og landingsavgift.
- Det vil bli mulighet for å sette opp telt ved fly.
- Det finnes flere hotel på Oppdal med god kapasitet (eks. Skifer hotel Oppdal)
- For lokal vær info, send tekstmelding STA til 48212740.
- Flyplassen selger 100LL, Jet A-1, og AVGAS.
- Ta gjerne kontakt hvis dere trenger mer info.
- HAVE A SAFE FLIGHT!!



OPPDAL

INTERNATIONAL
EXPERIMENTAL FLY-IN

19-21 AUGUST 2016

EAA 40år!



PROGRAM

Program/Info for the Fly-In in cooperation with Oppdal Flying Club

EAA Chapter 573 Norway & Oppdal Flyklubb have the pleasure of inviting you to the EAA573 Jubilee Fly In.

Friday 19.08.16

- 16:00 – 20:00 Arriving aircraft. The first 8 pilots who wish so have the opportunity to get beds. The rest have to organize own accommodation (tents, or hotel etc.)

Saturday 20.08.16

- 09:00 – 11:00 Breakfast
- 09:00 – 18:00 Arriving aircraft ("Beer call" 18:00)
- 13:00 - Common mountain flight "Innerdalsrunden"
- 1830 - 1900 RC Petit Airshow
- 1900 - 1930 Sundown Airshow
- 20:00 – 02:00 Dinner in the Microlight hangar
- 20:00 – 21:00 Quiz & Prizes

Sund 21.08.16

- 09:00 – 11:00 Breakfast (Departures all day)

Important notes

Contacts

Flyplassjef :	Odd Nyberg,	E-mail: oddnyberg@online.no,	Tlf +47 932 17 042
EAA Chapter 573 :	Øystein Aune,	E-mail: oysteinaune83@gmail.com,	Tlf +47 920 16 122
EAA Chapter 573 :	Øyvind Nyberg,	E-mail: oyvind_lynx@msn.com,	Tlf +47 979 57 820
Flyplassinfo:	Otto Vollan,	E-mail: otto.vollan@oppdal.com	Tlf +47917 66 740

- More info on the airport at: www.mfl.no
- Please read the regulations connected with the airport, (note especially the noise reducing flight paths)
- Please submit your RSVP regarding the Saturday dinner at 17th of August at the latest.
- There is no PPR or landing fee for participants of the Fly In
- Placing tents next to aircraft is ok!
- There are several Hotels with good accommodation and capacity in Oppdal (ex. Skifer hotel Oppdal)
- For local weather send sms: STA to +4748212740.
- Available fuels: 100LL, Jet A-1, & AVGAS.
- Please contact the individuals noted above for additional infos.
- HAVE A SAFE FLIGHT!!

OPPDAL
FAGERHAUG
NORWAY



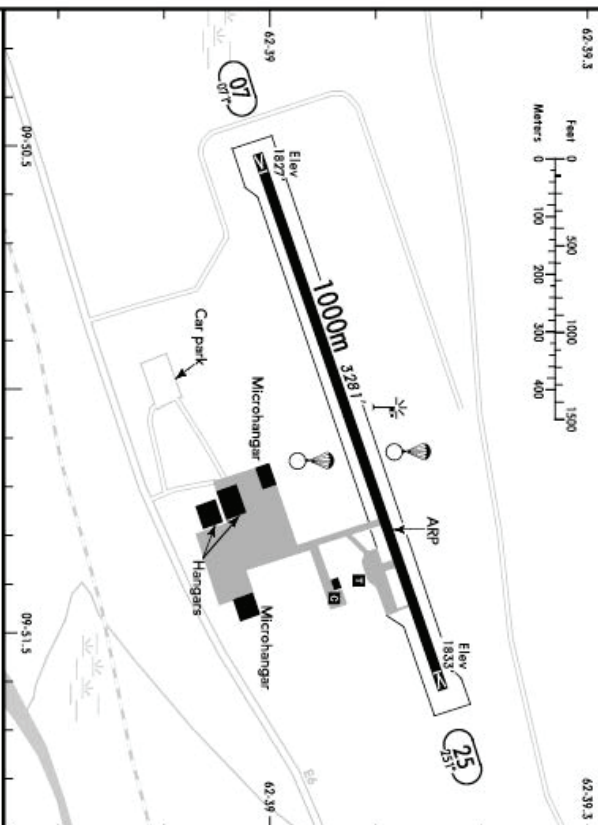
CHPTR:573NOR

19-2 26 NOV 10



JEPPESSEN

(FIS) BODØ CONTROL **125.70**



○ PLASI (4.5°) - THR - RL - WDI.					
RWY No	Dimension (m) - Surface	TORA (m)	LDA (m)	Strength	Lights
07	1000 x 18 Asphalt	936	936	5.7+ MTOW	○
25					○

● 5.7-6.5 MTOW (for parachuting only) - TORALDA RWY 07/25: 876m.

AD PPR. Further info via www.mfi.no.
Use REPs and report before entering downwind.
RWY 25 is the preferred RWY.
RWY 07 RH traffic circuit, RWY 25 LH circuit.
Make downwind well south of RWY, due to parachute drop between road E6 and RWY.
PCL with PLASI AVBL: Transmit at 122.95 in 5 SEC gives lights 26 MIN.
Due to heavy parachute activity on weekends, do not overfly AD.
Ask for RWY in use.
ULM make circuits in 500' SFC for vertical separation. Look out for gliders.
RWY slightly sloping (1.5%) to the south, across RWY.

CHANGES: New Layout, RWY Dimensions, Lighting, Taxi. © JEPPESSEN, 2010. ALL RIGHTS RESERVED.

JEPPESSEN
26 NOV 10



CHPTR:573NOR

19-1

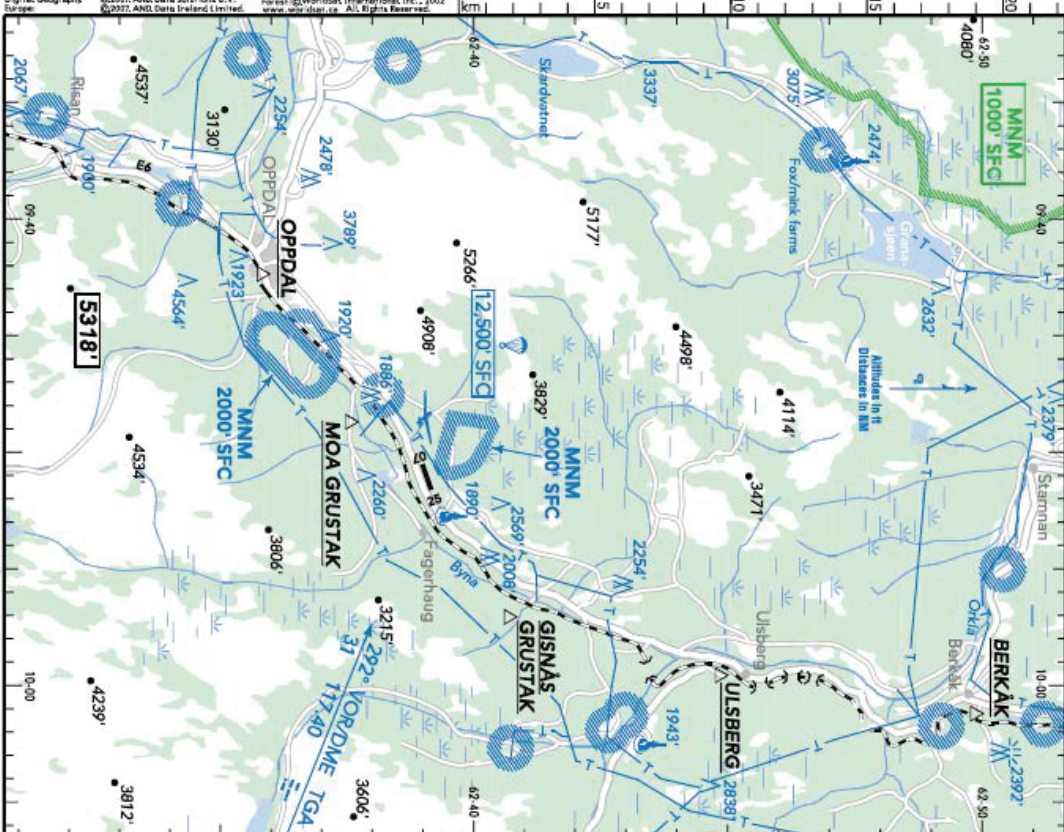
ENOP
Elev **1834/559m**
N62 39.1
E009 51.3

OPPDAL

FAGERHAUG
NORWAY

(Radio) OPDPAL RADIO **122.95** (loc, en)

RWY	ILS	RWY	ILS



CHANGES: Airspace, OBST, Topography. © JEPPESSEN, 2007, 2010. ALL RIGHTS RESERVED.